

AT-THE-READY

Consultant Engineering Services for Municipalities
TECHNICAL PROPOSAL

MUNICIPAL PROJECT MANAGEMENT SERVICES



DuBois & King inc.

TABLE OF CONTENTS

Cover Letter

next page ▶

General Firm Information

Introduction to the Consultant Firm 1

Organizational Chart 2

Availability Chart 3

Municipal Project Management Services

Qualifications and Experience of the Firm 4

Selected Municipal Project Management Experience 5

Key Staff 6

Resumes



623715X
January 6, 2017

Nydia Lugo, Technical Development Engineer
Vermont Agency of Transportation
One National Life Drive
Montpelier, VT 05633-5001

**Subject: VTrans At-the-Ready Consultant Engineering Services for Municipalities
Municipal Project Management Services**

Dear Ms. Lugo and Members of the Selection Committee,

DuBois & King (D&K) is pleased to submit ten (10) paper copies and one (1) electronic copy of our Technical Proposal in response to your November 28, 2016 Request for Qualifications for At-the-Ready Consultant Engineering Services for Municipalities (ATR). Please consider the following as you review our proposal:

For nearly 100 projects, D&K has provided scoping, design, municipal project management, and/or construction phase services for Municipal Assistance Bureau (formerly Local Transportation Facilities Section) projects since the program's inception in the 1990s.

D&K staff have a clear understanding of the requirements of the MAB program, the needs of municipal governments ranging in size from Rochester to Burlington, and our staff maintain positive, working relationships with Vermont's regional planning commissions and the regulatory community. We are committed to providing qualified, well-equipped, experienced, and responsible professionals who perform high-quality work on a consistent basis.

D&K has dedicated planning, design, and construction professionals that have provided services on hundreds of projects throughout Vermont over our 55-year history. Our design experience spans a wide range of transportation and infrastructure improvement projects including: roadway/highway reconstruction, paving and pavement management, bridges, culverts, dams, water/wastewater, sidewalks/pathways, utilities reconstruction and replacement, stormwater, river and bank stabilization, vertical construction, and site improvements.

D&K's team includes in-house personnel that address the needs of MAB projects. We appreciate your consideration of our qualifications and look forward to continuing to support Vermont municipalities on state and federally funded transportation and infrastructure improvement projects. We would be pleased to answer any questions you may have. Please do not hesitate to give me a call at 802-728-3376 or contact me via email at dbenoit@dubois-king.com.

Sincerely,
DuBois & King, Inc.

Darren Benoit, PE
Vice President
Director, Transportation Division

Darren retired from D&K. See next page for September 6, 2019 update.



623715X
September 6, 2019

Nydia Lugo, Technical Development Engineer
Vermont Agency of Transportation
One National Life Drive
Montpelier, VT 05633-5001

**Subject: VTrans At-the-Ready Consultant Engineering Services for Municipalities
Municipal Project Management Services**

Dear Ms. Lugo,

DuBois & King (D&K) is pleased to provide a revised organizational chart and professional resumes to reflect the firm's current staff available to provide Municipal Project Management (MPM) services. Please consider the following as you review this submission:

The MPM personnel we are presenting as additional personnel under this contract are all seasoned project managers qualified to guide/oversee infrastructure management projects following the MAB process. D&K staff contained within this submission also have a clear understanding of the needs of municipal governments ranging in size from Rochester to Burlington. Our staff maintain positive, working relationships with Vermont's regional planning commissions and the regulatory community.

D&K offers an expanded team of in-house personnel who will address the needs of MAB projects. D&K appreciates your consideration of our qualifications and look forward to continuing to support Vermont municipalities on state- and federally-funded projects. We would be pleased to answer any questions you may have. Please do not hesitate to give me a call at 802.878.7661 or contact me via email at krobie@dubois-king.com.

Sincerely,
DuBois & King, Inc.

A handwritten signature in blue ink, appearing to read 'Ken Robie', is written over a faint, larger version of the signature.

Ken Robie, PE
Senior Project Manager

GENERAL FIRM INFORMATION

Introduction to the Consultant Firm

This document details DuBois & King’s (D&K’s) experience and qualifications to provide Municipal Project Management (MPM) services on projects being designed by others. D&K understands that we will act as an extension of municipal staff, and work cooperatively with regulatory agencies, VTrans, the Design Engineer, and Construction Inspector to develop and/or manage projects in a focused and efficient manner.

D&K is currently providing Project Administration services on three transportation projects being developed by municipalities through VTrans’ Municipal Assistance Bureau (MAB). In our role as Municipal Project Manager (MPM) in South Hero, we are taking a leadership role in the development of the South Street Improvement Project, which will involve the reconstruction of 2.1 miles of the roadway, improve drainage, and provide modest shoulders for improved bicycle accessibility. When the project was initiated, the Town was unfamiliar with the VTrans Project Development Process, and so D&K is advising them along every step of the project, keeping them updated as to the status of design, permitting, and property negotiations; acting as liaison between VTrans and the Town; reviewing design consultant invoices; providing periodic updates to the Selectboard; leading public hearings; and advising the Town regarding next steps.

D&K is also working with the City of Montpelier as MPM on the Carr Lot project, which will redevelop a portion of the downtown area, and provide enhanced accessibility for pedestrians and transit users, as well as the addition of parking. This project is also being administered through VTrans MAB, and although the City is familiar with the VTrans Project Development Process, the project is complex and the City is relying on D&K to keep all parties engaged and doing their part to ensure the project is advancing towards construction. D&K also is currently serving as MPM for the \$4.5M Hartford Roundabouts Project.

Each of our key staff members are experienced with projects administered through VTrans, and has project management experience that will be applied to MAB projects.

The following pages detail the firm’s areas of service that pertain the Request for Qualifications (RFQ). **D&K does not anticipate the use of subconsultant resources** for the services described on page 2 under the “Municipal Project Management Services” consultant categories in the RFQ. We have therefore not included a subconsultant section in this document.

Contact Information:

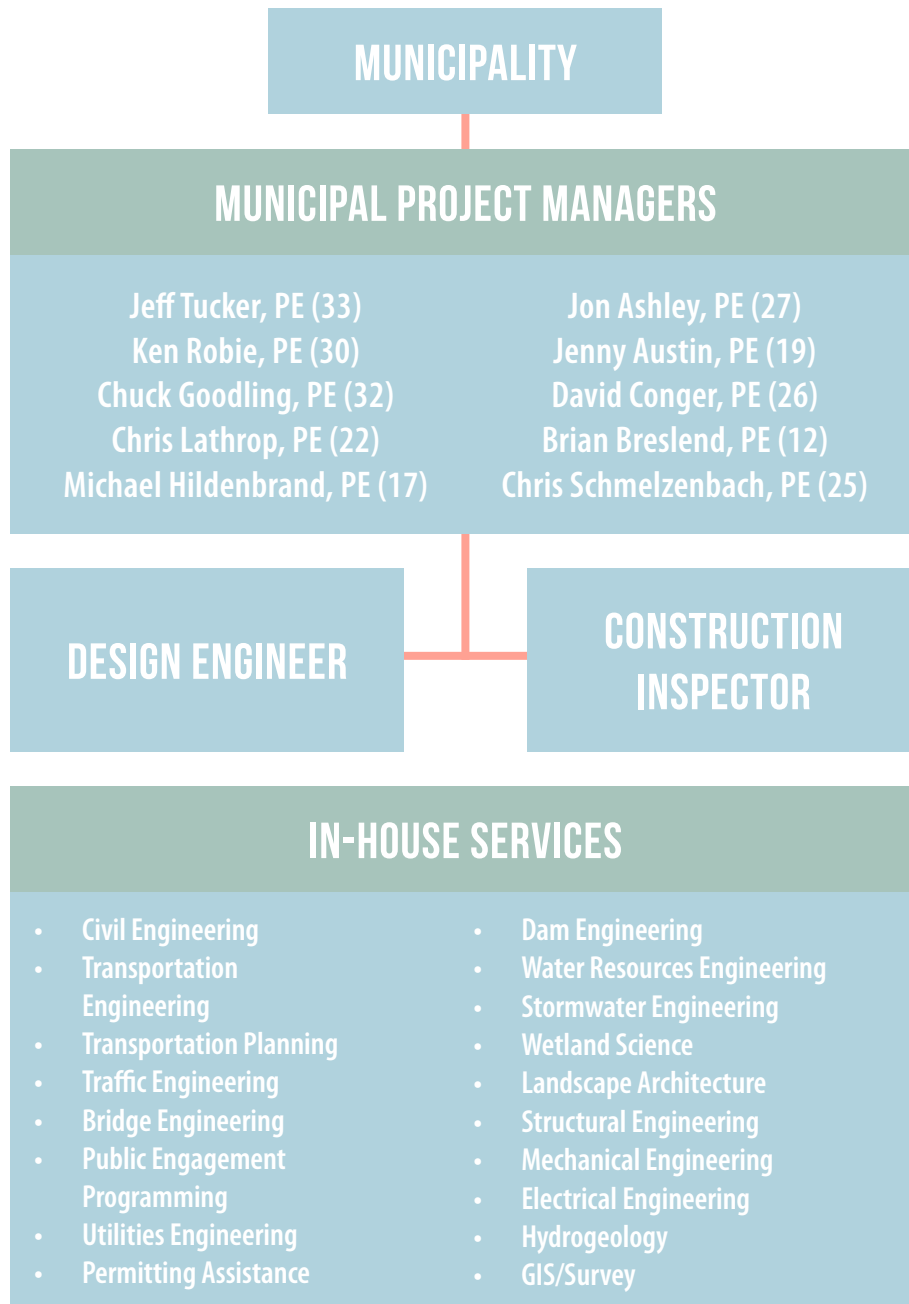
DuBois & King, Inc., 28 North Main Street, Randolph, VT 05060, 802.728.3376
 Darren Benoit, PE, 802.728.3376, dbenoit@dubois-king.com—

Ken Robie, PE, 802.878.7661, krobie@dubois-king.com (September 6, 2019 update)

Organizational Chart

September 6, 2019 Update

MUNICIPAL PROJECT MANAGEMENT SERVICES



Note: above are key staff available for MAB projects. Years of experience are listed in parentheses following each team member's name.

Availability Chart

Below is an overview of staff availability based on billing rates and the overall maximum limiting amount of the MPM contract.

Staff Member Name	Position	Availability %
Jeff Tucker, PE, LEED AP	Municipal Project Manager	25
Darren Benoit, PE, CPESC	Municipal Project Manager	25
Lucy Gibson, PE	Municipal Project Manager	25
Chris Lathrop, PE	Municipal Project Manager	25
Chris Schmelzenbach, PE	Municipal Project Manager	25
John Merrifield, PE	Municipal Project Manager	60
Brian Breslend, PE	Municipal Project Manager	60

New personnel added on September 6, 2019. See updates in the Resumes Section.

MUNICIPAL PROJECT MANAGEMENT SERVICES

Qualifications and Experience of the Firm – MAB/LTF Projects. Below is an overview of the firm’s experience for selected MAB/LTF projects. D&K served as the prime consultant for all of these listed projects. For design projects, D&K staff led and provided civil and transportation engineering, survey, NEPA and applicable state permitting assistance, bid phase assistance, and design engineer services during construction. As further evidence of the firm’s understanding of federal and state regulations and standards, D&K is currently engaged as a prime consultant for the following 12 on-call VTrans contracts: Highway Resurfacing, Roadway and Safety, Aviation, Rail, Policy and Planning, ROW and Boundary, Operations Stormwater, Covered Bridges, Construction Inspection, General Environmental, Civil Engineering Consultant, Construction Management Services.

Project Name	Location	Study	Design	Construction Phase
US 4 Sidewalks	Woodstock		▲	
VT 14 Sidewalks	Williamstown		▲	
Websterville Rd & Graniteville Road Sidewalks	Barre Town		▲	
Northfield Common Sidewalk	Northfield Village	▲	▲	
Warners Corner Sidewalks	Colchester		▲	
Exit 16 Sidewalks	Colchester		▲	
VT 15 Sidewalk	Essex Town		▲	
Cross and Railroad Street Sidewalks	Brighton		▲	
Mt. Philo Sidewalk	Shelburne		▲	
Maple St & Union St Sidewalks	Brandon		▲	
Gateway Enhancement Project	Alburgh	▲		
East Montpelier Safety Improvements	East Montpelier	▲	▲	
Fairfield Sidewalks	Fairfield		▲	
Hardwick Village Sidewalks	Hardwick		▲	
VT 116 Sidewalks	Hinesburg		▲	
Colchester Avenue Sidepath	Burlington		▲	
West Pleasant Street Sidewalk Improvements	Bristol		▲	
West Rutland Sidewalk Study	West Rutland	▲		
Saxton's River Elementary School Sidewalk	Rockingham		▲	
Union Street Sidewalk	Bennington			▲
Main Street Sidewalk	Brattleboro			▲
VT 100 Sidewalk	Stamford			▲
Village Core Sidewalks	West Rutland			▲
4th Street Sidewalk	Fair Haven			▲
Brooklyn Street Sidewalk	Morristown			▲
Depot Street Sidewalk	Hyde Park			▲
Village Sidewalk	Jamaica			▲
West, Church, and Court Street Sidewalks	Newfane			▲
Kennedy Pond Safe Routes to School Sidewalk Project	Windsor			▲

Project Name	Location	Study	Design	Construction Phase
Chimney Hill Road Culvert Replacement	Wilmington		▲	
Bridge Street Bridge Rehabilitation	Rockingham		▲	
Village Covered Bridge Rehabilitation	Waitsfield		▲	
Warren Covered Bridge	Warren		▲	
VT 140 Truss Bridge Rehabilitation	Wallingford		▲	
Hardwick "Swinging Bridge" Rehabilitation	Hardwick		▲	
Randall Covered Bridge Rehabilitation	Lyndon		▲	
Pearl Street Bridge Rehabilitation	Johnson		▲	
Hebard Hill Road Bridge Replacement	Randolph		▲	
Stone Road Bridge	Ryegate		▲	
Hillside Drive Bridge	Ryegate		▲	
Butternut Hill Road Bridge Replacement	Waitsfield		▲	
Pumpkin Lane Bridge Replacement	Hardwick		▲	
Hectorville Covered Bridge	Montgomery	▲		
Bridge Repair, Bethel	Bethel			▲
Bridge Repair	Enosburg			▲
Bridge #9 Over Saxtons River	Rockingham			▲
Portland Street Bridge	St. Johnsbury			▲
Bridge #17 on Route 144	Benson			▲
Center Road TH#3 Repaving	Hardwick		▲	
Maple Street Reconstruction	Weathersfield		▲	
US 2/302 Roundabout	Montpelier			▲
Powder Springs Road Paving	Topsham			▲
Paine Turnpike Resurfacing	Berlin		▲	
Bridge Street Stormwater and Roadway	Waitsfield		▲	
Waterbury Roundabout	Waterbury			▲
Crescent Connector Road	Essex Junction		▲	
Farr Road Extension	Waterbury			▲
Whipple Hollow Road and Marble Street Paving	West Rutland			▲

Project Name	Location	Study	Design	Construction Phase
Three Rivers Path	St. Johnsbury		▲	
Webster Road Path	Shelburne		▲	
Montpelier Bike Path	Montpelier	▲		
Smith Street Path	Barre City		▲	
Toonerville Trail	Springfield		▲	
Millstone Hill West Path	Barre Town		▲	
Killington Walkway	Killington	▲		
Hardwick Multiuse Path	Hardwick		▲	
Valley Trail	Dover			▲
Whetstone Brook Path and Pedestrian Bridge	Brattleboro		▲	▲
Bicycle and Pedestrian Improvements	West Hartford	▲		
Bicycle and Pedestrian Improvements	St. Johnsbury	▲		
Bicycle and Pedestrian Improvements	Rochester	▲		
Bicycle and Pedestrian Improvements	Wilmington	▲		
Bicycle and Pedestrian Improvements	Jericho	▲		
Cabot Village Pedestrian Improvements	Cabot	▲		
Northfield Common Sidewalks	Northfield		▲	
Canaan Sidewalk/Path Improvements	Canaan			
Path Around Lyndon	Lyndon		▲	
PlanBTV Walk Bike	Burlington	▲		
Essex Town-Village Bicycle Pedestrian Plan	Essex and Essex Junction	▲		
Charlotte Ferry Road sidewalk and Crossing	Charlotte	▲		
Town of Charlotte Park & Ride Feasibility Study	Charlotte	▲		
Northfield Crosswalks	Northfield		▲	
Williamstown Radar Feedback Signing	Williamstown		▲	
Technical Assistance	Westford	▲		
Technical Assistance	N. Bennington	▲		
VT 17 Pathway Planning Study	Bristol	▲		
Lamoille Valley Rail Trail	Danville			▲
Hubbardton Salt Shed	Hubbardton		▲	
Park & Ride Expansion	Weathersfield		▲	
Park & Ride Expansion	St. Albans			
Village Green Lighting	Bristol			
Main Street Bridge Lighting	Plainfield			
Smugglers' Notch Scenic Highway Corridor	Smugglers Notch			
Village Green Lighting	Bristol			

Selected Municipal Project Management Experience

South Street Improvements, South Hero (out to bid)



contact: Chris Herrick,
 Selectboard Chair, 479.7586
 chris.herrick@vermont.gov

DuBois & King was selected to perform project management services by the Town of South Hero for an LTF project to better accommodate bicyclists along portions of South Street and Martin Road. The project area was located on South Street from an intersection with US Route 2 to Martin Road and along Martin Road from South Street to Allen Point Access Area Road. The total project length was 1.5 miles along the route marked as the Champlain Parkway, a popular cycling route. D&K was retained as Municipal Project Manager to provide support to the Town by acting as a liaison between the Town and VTrans. Specific responsibilities include advising the Town regarding the LTF Project Development Process, preparing a request for proposals and soliciting engineering proposals for design of the project, reviewing the engineering consultant's progress as the design was developed, acting on behalf of the Town for right-of-way negotiations, facilitating public meetings and discussions, assisting in the review of construction bid documents once the design was completed, performing administrative duties during construction, and keeping records of project correspondence and files.

Carr Lot/One Taylor Street, Montpelier (in construction)

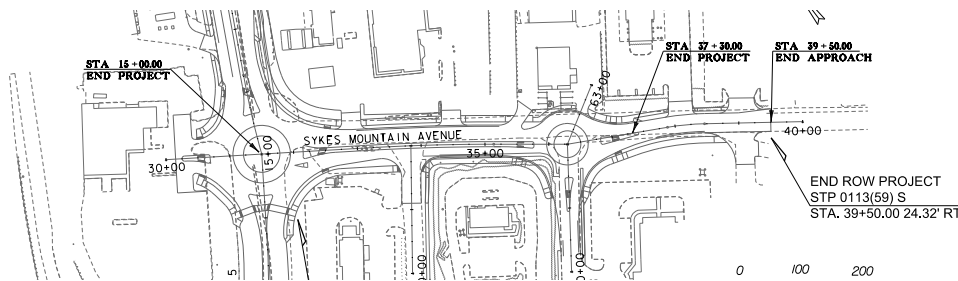


contact: Bill Fraser, City
 Manager, 223.9502, wfraser@
 montpelier-vt.org

D&K is serving as the Municipal Project Manager for a \$7.5-million federally funded, VTrans MAB project. The project includes the design of a new 4-story Transit Center, bike path and pedestrian bridge, and intersection with Main Street, and coordination with regulatory agencies for the redevelopment of this brownfield site. D&K led the Project Definition and Project Design phases on behalf of Montpelier including preparation of RFP's/RFQ's for survey, engineering, and archaeology; led the technical proposal reviews, ranking, and consultant selection process; prepared professional services agreements; developed project schedules and progress reports; and coordinated with VTrans and federal officials regarding funding eligibility and other related programmatic issues.

D&K conducted independent technical reviews of engineering plans and cost estimates; organized/led project meetings for design; coordinated utility issues; and managed ROW acquisition services, including appraisals, property surveys, prepared ROW documents (plans, easement descriptions, takings, relocations, etc), and coordinated with VTrans ROW officials. A portion of the project is in the construction phase.

Roundabouts, Hartford (in Design)



contact: Rich Menge, Public
 Works Director, 295-3622

Municipal Project Management (MPM) services for the construction of roadway improvements along the western end of Sykes Mountain Avenue. The project will improve traffic flow through and access to businesses, enhance safety, and improve roadway surfaces/stormwater drainage. Project improvements includes: reconstruction/realignment of approximately 800 ft of Sykes Mountain Avenue, reconstruction of several hundred feet of US Route 5, construction of two new roundabouts, addition of sidewalks, numerous changes to driveways, reconstruction/expansion of drainage system, addition of street lights, removal of the traffic signal at the intersection of Sykes Mountain Avenue and US 5.

Key Staff

Staff Member Name	Experience	Expertise/Focus
Jeff Tucker, PE, LEED AP	30 years	Civil, Bridges, Roadways, Water Resources, Permitting

Jeff has 30 years of experience as a Project Manager and Civil Engineer involved in the management, design, coordination, and execution of civil works projects with a focus on bridges, roadways, and civil structures. Jeff has performed detailed engineering and civil/structural design for over 100 bridges, large drainage structures, highways, pedestrian/bicycle pathways, intersections, dams, and other water resource and transportation related projects. He is Municipal Project Manager for the Montpelier Carr Lot/One Taylor Street Project.

Darren Benoit, PE, CPESC	27 years	Civil, Traffic, Transportation Engineering, Permitting
---------------------------------	-----------------	---

Darren is a civil engineer who has provided management for complex, roadway, bridge, and multimodal transportation projects. His experience has been applied to the creation of horizontal and vertical alignments, typical sections, open and closed drainage systems, urban roadway design, traffic engineering, erosion and sediment control plans, permitting, utility relocation, and bicycle paths. He serves in a QA/QC role for the firm's MPM services related to the Hartford Roundabout project.

Lucy Gibson, PE	28 years	Transportation Planning, Traffic Engineering
------------------------	-----------------	---

Lucy is a civil engineer and transportation planner with experience serving municipalities, regional commissions, and private entities. Her specific experience includes multimodal transportation planning, design, and engineering for walkable streets, downtown transportation circulation, and multimodal traffic impact studies for infill "smart growth" development. She is Municipal Project Manager for the Hartford Roundabouts Project.

Chris Lathrop, PE	20 years	Civil, Railroad, and Transportation Engineering
--------------------------	-----------------	--

Chris is a Civil Engineer with experience ranging from the reconstruction of highways, local roadways, and intersection improvement projects, to pathways and sidewalks. He has led or managed design of signing, striping, interstate highway, bridge, streetscape, bike lane, sidewalk and slope projects. He is Municipal Project Manager for the South Hero South Street Improvements project.

New personnel added on September 6, 2019.
 See updates in the Resumes Section.

Chris Schmelzenbach, PE	24 years	Civil and Transportation Engineering
--------------------------------	-----------------	---

Mr. Schmelzenbach is a Civil Engineer with 24 years of experience in transportation projects. His background includes 6 years working for VTrans as Project and Resident Engineer on a variety of roadway and bridge projects. Chris has provided preliminary and final designs, cost estimation, plan development, field survey, utility coordination, and resident engineering for a variety of sidewalk, pathway, roadway, and bridge projects. Chris is knowledgeable of projects administered through the VTrans Municipal Assistance Bureau (MAB), including all phases of project development from project conception through construction. He served as Municipal Project Manager for the STP BIKE(30)S multimodal project in Woodstock.

John Merrifield, PE	14 years	Civil, Railroad, and Transportation Engineering
----------------------------	-----------------	--

John is a civil engineer with experience supporting state and municipal projects. As a member of DuBois & King's Transportation Department, John has been responsible for alternatives analyses; traffic signal design; design of traffic control, signing, and pavement marking plans; plan development; quantity and cost estimating; and construction oversight for roadway, drainage, bridge, road reconstruction, and paving projects. He has provided support to Jeff Tucker on the Carr Lot.

Brian Breslend, PE	9 years	Civil, Railroad, and Transportation Engineering
---------------------------	----------------	--

Brian is a civil engineer with experience including the preparation of alternatives analyses; preliminary and final designs; cost estimation; plan development; field survey; and utility coordination for a variety of pathway, sidewalk, and roadway projects.

New personnel added on September 6, 2019.
See updates in the Resumes Section.



Jeff Tucker, PE, LEED AP

Years of Experience: 33

Years with D&K: 33

Education: B.S., Civil Engineering, University of Vermont, 1987, A.S., Civil Engineering Vermont Technical College, 1983, A.S., Business Management, Daniel Webster College, 1980

Registrations: Civil Engineer: VT, NH, ME, NY, NJ; LEED Accredited Professional, Certified Site Technician: VT 314, 8 Hour Entrant & Attendant Program; Entry Supervisor Program; NHDOT LPA Certification

Mr. Tucker has 33 years of experience as a Project Manager and Civil Engineer involved in the management, design, coordination, and execution of civil works projects with a focus on bridges, roadways, and civil structures. Jeff has performed detailed engineering and civil/structural design for dams (removal and restoration), over 100 bridges, large drainage structures, highways, pedestrian/bicycle pathways, intersections, and other water resource and transportation related projects. His experience encompasses hydrology and hydraulics, dambreak analyses, structural and geotechnical engineering, stormwater analyses, roadway geometrics, cost estimating, watershed and flood control planning, technical writing, environmental and ecosystem analyses, slope bioengineering, natural channel design/river restoration, permitting, and construction supervision. He has been directly involved with projects during construction, including resident inspections, design modification to accommodate unexpected site conditions, coordination with contractors and owners, and quality control reviews. Jeff has worked extensively with federal, state, and municipal officials for a large number of bridge, roadway, and other infrastructure projects.

Municipal Project Manager, Multi-Modal Transit & Welcome Center, City of Montpelier, VT. Municipal Project Manager for the City of Montpelier's Multi-Modal Transit and Welcome Center, located to the north of Taylor Street in downtown Montpelier. Responsible to assist the City in advancing all planning activities through design and construction. The Transit and Welcome Center is planned to support public bus operations and include a State of Vermont Visitors Center, traveler and parking accommodations, green space, and residential units. Assisting in developing RFPs for consultants, managing the permitting process, and assisting with grant and financial management and development planning and implementation.

Pearl Street Bridge, Johnson, VT. Project Manager for replacement/rehabilitation of Bridge No. 5 on Town Highway No. 1 (Pearl Street). Provided full engineering design, survey, and construction services for the new superstructure consisting of 150-ft, continuous, horizontally curved, steel beams with a composite concrete deck. Project incorporates Texas Classic bridge rail and a new sidewalk on both sides of the bridge. Services included a site visit and pre-design meeting, survey and deed research, investigation of viable superstructure and alignment alternatives, organization and presentation of the alternatives at a public meeting, preparation of right-of-way plans, utility relocations, property owner meeting, structural design, and contract bid documents.

Three Rivers Transportation Pathway, St. Johnsbury, VT. Principal-In-Charge for development of 1.1-mile-long, 10-foot-wide shared use pathway following the former Lamoille Valley Rail Corridor. Alternatives were developed to avoid wetlands and historic resources and to minimize property owner impacts.

The project includes the retrofitting of a former rail bridge for pedestrian traffic. Responsible for Quality Control Reviews. Project was developed through Local Transportation Facilities (LTF) Program.

Exit 16 Sidewalks Project, Colchester, VT. Project Principal for design and construction phase services for 1,800 linear feet of new sidewalks along U.S. Route 2/7 near Exit 16 of I-89. Scope includes survey, right-of-way research, conceptual plans, right-of-way establishment, utilities, environmental resource impacts, preliminary and final plans, streetscape improvements, cost estimates, and permitting. This was an LTF project.

Taylor Street Reconstruction, Montpelier, VT. Project Manager for a \$1M roadway, pedestrian, and green stormwater demonstration project. Provided oversight of design and cost estimating, led coordination between ongoing and abutting roadway, bike path, transit center, and railway projects. This project involves reconstruction of 425 LF of roadway, water/sewer lines, and 600 LF of sidewalk; installation of pervious pavement, street trees, streetlights, stormwater infiltration systems, rain gardens; and roadway reconfiguration for a left turn lane.

Ayers Street Intersection Upgrade, Barre, VT. Project Manager for locally managed, VTrans LTF sponsored project, including evaluation and design of improvements for South Main Street (Rt. 14)/Ayers/Hill Street intersection and railroad crossing.



Ken Robie, PE

Years of Experience: 30

Education: B.S., Civil Engineering, University of Vermont, 1989

Years with D&K: <1

Registrations: Professional Engineer: VT 6524

Mr. Robie has 30 years of experience in transportation engineering. His background includes project management and design for all types of highway projects. He has experience supervising project teams, setting budgets and schedules, reviewing cost proposals and consultant scopes of work, and coordinating all aspects of project development involving VTrans, the Federal Highway Administration, other state and federal agencies, and the general public.

Roundabouts and Roadway Reconstruction, US 5 and Sykes Mountain Ave, Town of Hartford, White River Junction, VT. Municipal Project Manager working with the Town of Hartford and design engineer for final construction plans, specifications and estimate for two roundabouts at the intersection of US 5 and Sykes Mountain Avenue and the intersection of Sykes Mountain Avenue and Lehman Road. The project also includes roadway approach work, utility coordination, and drainage design. The existing condition is signalized intersection at Sykes Avenue and US 5. This project follows the VTrans MAB process.

Slope Stabilization, Center Road, Brownington, VT. Municipal Project Manager working with the Town of Brownington and design engineer to develop a project to mitigate the large amount of sediment flowing into the Willoughby River at two sites along Center Road. The project will stabilize slope sites, manage erosion, sediment discharge, and stormwater in the project area. This project follows the VTrans MAB process.

US Route 7 Road Reconstruction, Shelburne and South Burlington, VT. VTrans Project Manager during the final two years of construction of these two projects. The projects consisted of full-depth reconstruction and widening of the most heavily traveled portion of US Route 7. The projects included multiple signalized intersections, installation of a raised median, drainage and stormwater management, utility relocation, bicycle and pedestrian facilities, and landscaping.

US Route 7 Road Reconstruction, Pittsford and Brandon, VT. VTrans Project Manager during preliminary design, early right-of-way acquisition of select properties, and Act 250 permitting for the southerly segments for the corridor reconstruction.

US Route 2 Road Reconstruction and Realignment, Cabot, VT. VTrans Project Manager for final design, final Act 250 permitting and construction of a 1.5-mile segment of US 2 along Marshfield Reservoir. The project included full-depth reconstruction and minor realignment of US Route 2, the addition of a long climbing lane, and significant shoulder

widening through an environmentally sensitive area. The project also included the design, permitting, property acquisition and construction of a large wetland mitigation site in a nearby retired gravel quarry.

Highway Division, VTrans, Montpelier, VT. Project Delivery Bureau Director responsible for the management of the bureau, which included structures and highway design, right of way, utilities and survey, and environmental services. The bureau is responsible for the delivery of all transportation projects within the associated Capital Improvement Programs, including project management, design, permitting, property acquisition and utility coordination necessary to produce contract bid documents (plans, specifications and estimates) for construction.

Highway Safety and Design Section, VTrans, Montpelier, VT. Highway Safety and Design Program Manager responsible for managing roadway, paving and traffic capital improvement programs. He provided project management and design of all transportation projects in these programs, ranging from small culvert replacements to National Highway System roadway reconstruction projects.

Highway Safety and Design Section, VTrans, Montpelier, VT. Project Manager for roadway design projects utilizing both in-house and consultant staff. He supervised a five-person design squad; determined budgets and schedules for multiple projects of varying scope and difficulty; represented VTrans at public meetings, permit hearings and legal proceedings; reviewed and approved consultant scopes of work, cost proposals and invoices; coordinated all aspects of project development involving VTrans, other state agencies, Federal Highway Administration, other federal agencies, interested parties and the general public.



Chuck Goodling, PE

Years of Experience: 31

Years with D&K: 29

Education: B.S., Civil and Environmental Engineering, Utah State University, 1984
A.A.S., Ecology & Environmental Technology, Paul Smith's College, 1981

Registrations: Civil Engineering: VT 5797

Mr. Goodling is a Senior Engineer with 31 years of experience with municipal infrastructure improvement projects. Chuck is a skilled project manager, experienced in cost estimating, scheduling, client and community liaison, and quality control. This work has included planning and evaluation of alternatives; detailed engineering design; infrastructure asset management; cost estimating; quality control and value engineering; client relations; and interaction with municipal, state, and federal agencies regarding permitting, funding, and project approvals.

Construction Phase Services, US Route 7 Segment 6, Brandon, VT. Principal-in-Charge for full time construction administration and observation services on a \$20M roadway/utilities improvement project in the heart of downtown Brandon. The project includes reconstruction of more than a mile-long section of US Route 7 roadway, all associated intersections and two parks. D&K is providing four full-time construction inspectors to support the improvements. The project was developed through the Municipal Assistance Bureau (MAB) of VTrans.

Construction Inspection Services, Killington Avenue Sidewalk Extension, Rutland, VT. Construction Manager for construction phase services for 1,480 feet of new sidewalk including drainage improvements and box culvert replacement. The project was developed through the Municipal Assistance Bureau (MAB) section of the Vermont Agency of Transportation (VTrans). D&K provided construction administration, construction observation, and oversight of inspection and sampling/testing of construction materials on behalf of the municipality.

Creek Road Sidewalk and Road Reconstruction Project, Middlebury, VT. Principal-in-Charge for construction observation and administration for construction of a 5-foot-wide concrete sidewalk, drainage improvements, and roadway reconstruction project. Funding for the sidewalk was administered by the VTrans Municipal Assistance Bureau. The roadway reconstruction component was completed using municipal funds.

Construction Phase Services, Waterbury Roundabout, Waterbury, VT. Manager of Construction Phase Services for a new vehicular roundabout at the intersection of US Route 2 and VT Route 100. This \$3.9M project included: modification and rehabilitation to existing bridges for roadway and pedestrian accommodation; partial and complete roadway reconstruction; imprinted island construction; stormwater management; parking reconfigurations and improvements; new sidewalks, curbing, crosswalks, and signage; undergrounding of utilities

(electrical and communications); replacement and extension of water and sewer mains; and lighting, landscaping, and streetscaping. Monitored construction and traffic control and coordinated regularly with state agencies, municipality, contractor, and design engineer.

Downtown Main Street Revitalization, Randolph, VT. Design and inspection services for improvements to bring aging municipal utilities (water, sewer, and stormwater) into conformance with current design standards, improve water distribution and wastewater collection system integrity, and enhance the hydraulics of the water distribution and fire protection systems. Project included replacement of all service lines within roadway right of way. Project initiated after three major fires destroyed large portion of business district.

Sidewalk Design, Woodstock, VT. Design and construction phase services for sidewalk design project funded through VTrans Local Transportation Facility (LTF) Section. The project was initiated with an assessment of alternative sidewalk alignments, materials of construction, crosswalk locations/types of surface treatments, and drainage requirements. The design provided for streetscape elements such as curbed and planted islands, lawns with trees, and lighting. Coordination with utilities was provided to accomplish relocation of several poles and right-of-way requirements were established.

CSO Abatement, Montpelier, VT. Manager of Construction Phase Services for bid/construction phase services of Combined Sewer Overflow Elimination Contract, an ARRA funded project. Coordinated with the City to arrange a pre-bid conference, attended bid openings, and provided review of Contract Document preparation.



Chris Lathrop, PE

Years of Experience: 22

Years with D&K: 13

Education: B.S., Civil Engineering, Norwich University, 1995
A.S., Civil Engineering, Vermont Technical College, 1992

Registrations: Civil Engineer: VT, NH

Mr. Lathrop is a Senior Transportation Engineer and the Highway Department Manager at D&K with 22 years of experience in transportation improvement projects. His professional experience includes the preliminary and final design of a variety of transportation projects for the Vermont Agency of Transportation, New Hampshire Department of Transportation, and numerous municipalities. Mr. Lathrop's roadway experience includes the reconstruction of local roadways and state highways, resurfacing and safety improvements for interstate highways, intersection improvements, pathways, and sidewalks. He has been involved in all phases of project development from project conception through construction including design, public participation, contract documents, utility coordination, traffic management plans, bidding, and construction administration and inspection.

Railroad Crossing Upgrade, Bridge No. 2, FH 17 Replacement, Brooklyn Road, Mount Tabor, VT.

Transportation Engineer for the replacement of Bridge No. 2 and widening and repaving of 3,900' along Forest Highway 17. Project elements include replacement of the bridge, cold planing, full depth reconstruction, roadway widening, railroad crossing upgrade, temporary bridge, roadway detour, waterline replacement, guardrail, and paving. Coordinated with Vermont Rail System and VTrans Rail to develop details for improvements to the crossing of Brooklyn Road with the Vermont Railway. Crossing upgrades included design for continuously welded rail, ballasts, bituminous paving, and signage.

Alternate US Route 7 Resurfacing Projects STP 2722(1), VTrans, Burlington, VT. Project Manager for plans for the resurfacing of 1.8 miles of Alternate US Route 7 (Winooski Avenue) and 2.6 miles of U.S. Route 7 (Willard Street) in the City of Burlington. These projects, which were developed for VTrans, incorporated bicycle lanes throughout much of their lengths. The design of the bicycle lanes included a variety of treatments, including: providing one dedicated lane in each direction in some areas, and providing a dedicated lane in one direction with a "share the road" condition in the opposite direction in other areas. Additionally, some bike lanes were located adjacent to the curb, while others were located between the vehicular travel lanes and the parking lane.

Sidewalk Design, Mt. Philo Road, Shelburne, VT. Project Manager responsible for the preliminary and final design of a 5-ft-wide concrete sidewalk along Mount Philo Road. The sidewalk, which includes a 5-ft green strip, begins at Wild Ginger road and extends 2,500 ft along the east side of Mount Philo Road to Falls Brook Road. The project included crosswalks, pedestrian ramps, concrete curbing, drainage improvements, environmental permitting, EPSC plan, and utility coordination.

Webster Road Bicycle and Pedestrian Path, Shelburne, VT. Project Manager for conceptual and final design for 1.1-mile-long bicycle and pedestrian path along Webster Road in Shelburne. The project extends the path from the entrance of the Boulder Hill Development at Boulder Hill Drive, to the west along the north side of Webster Road, to its intersection with Route 7.

Three Rivers Transportation Pathway, St. Johnsbury, VT. Senior Engineer for engineering services for a new 1.1-mile transportation path that included design upgrades to the WACR-CRD rail line/Bay Street grade crossing. The project included the retrofitting of a former rail bridge for pedestrian traffic. Responsible to oversee design of pathway alignment and alignment of rail crossing and evaluating alternatives to minimize impacts to adjacent roadways and properties, while meeting VTrans bike and pedestrian criteria.

Roadway and Safety Engineering Services Retainer Contract, VTrans, Statewide, VT. Project Manager for on-call retainer contract with the Vermont Agency of Transportation to assist with the development of roadway, intersection, and other safety related transportation projects throughout the State.

Road Improvements, Route 140, Middletown Springs, VT. Project Manager/Senior Highway Engineer for a 2,000-ft-long roadway improvement project along Vermont Route 140. This stretch of road was experiencing side slope erosion, inadequate drainage, and an inordinate amount of maintenance problems. Project elements included reclaim and paving roadway, slope stabilization, profile and superelevation modifications, and drainage improvements. Responsible for plan development, typical sections, culvert and cut-slope recommendations, and engineering services during construction.



Michael Hildenbrand, PE

Years of Experience: 18

Years with D&K: 2

Education: M.A., Public Administration, Norwich University, 2013
B.S., Electromechanical Engineering, Vermont Technical College, 2008

Registrations and Certifications: Civil Engineer: VT 102409; Nuclear Moisture/Density Equipment; ; 40-Hour OSHA HAZWOPER Certification; 8-Hour Confined Space Entrant & Attendant Program ; Lock-Out/Tag Out Program ; Entry Confined Supervisor Program; Vermont Natural Shoreland Erosion Control Certification (received 2018); Stormwater Management Certificate, University of New Hampshire, 2018

Mr. Hildenbrand has 18 years of experience in the design and permitting of site/civil engineering for commercial, civil, recreational, and governmental facilities. Michael has significant expertise in stormwater management and permitting and is thoroughly knowledgeable of updated Vermont stormwater regulations. He regularly provides Act 250 permitting support (VT ANR) and annual permitting for construction projects.

Montpelier-Berlin Shared Use Path, Montpelier, VT.

Stormwater Engineer/Permitting Specialist overseeing the stormwater permitting for a new bike path from Barre Street to Gallison Hill Road. The path will be a critical connection between Montpelier and Berlin and will provide an alternate commuter route and a unique transportation experience in Central Vermont. This federally-funded project follows the VTrans Municipal Assistance Bureau (MAB) process.

One Taylor Street, Transit Center, Montpelier, VT.

Senior Stormwater Engineer/Permitting Specialist for a federally-funded project that included a new 4-story Transit Center, bike path and pedestrian bridge, intersection with Main Street, and coordination with regulatory agencies for the redevelopment of a brownfield site. Oversaw design and permitting of stormwater collection conveyance and treatment system. This federally-funded project follows the VTrans Municipal Assistance Bureau (MAB) process.

Crescent Connector, Essex Junction, VT. Stormwater Engineer/Permitting Specialist to secure state stormwater permit for a new \$6.5 million, Federal Highway Administration (FHWA)-funded project to create an urban street to serve as a bypass around a congested, five-way intersection. Prepared design of subsurface stormwater infiltration system for new street. This federally-funded project follows the VTrans Municipal Assistance Bureau (MAB) process.

Gravel Wetland, Essex Junction, VT. Project Manager for the implementation of a Best Management Practice to support Flow Restoration Plan within the Indian Brook Watershed. Overseeing the design and construction of a subsurface gravel wetland. The project is federally funded and follows the VTrans MAB Guidebook. Coordination with archaeological subconsultant (Hartgen) and VT ANR Wetlands, and stormwater subconsultant (UNH Stormwater Center).

Operations Stormwater Contract, Vermont Agency of Transportation, Statewide, VT.

Project Manager responsible for managing assignments under an on-call contract to assist VTrans personnel with on-site stormwater projects as well as roadway stormwater projects built and maintained by VTrans Maintenance and Operations Bureau staff.

Hartford High School District Parking Improvements, Hartford, VT.

Project Manager responsible for the design and permitting of parking lot improvements. Oversaw preparation and submission of civil site plans and the stormwater discharge permit application for the stormwater treatment system design with focus on incorporating a new inlet structure with connections to existing storm trunk systems. Permitting submittal assistance included Site Plan Review, Construction General Permit for Stormwater and Act 250 Minor Amendment.

Fales, Summer, Franklin and Salisbury Street Reconstruction, Randolph, VT.

Project Engineer to support reconstruction of four municipal streets including municipal utilities. Prepared stormwater permitting. Working closely with Town to develop a single stormwater treatment location to handle all future stormwater treatment needs within the municipal stormwater collection system.

Prospect and Elm Roadway Reconstruction, Randolph, VT.

Project Engineer to support reconstruction of three municipal streets including municipal utilities. Prepared stormwater permitting. Developed stormwater treatment conveyance discharge that included a wet pond design. Prepared construction and operational stormwater permits.



Jon Ashley, PE

Years of Experience: 27

Years with D&K: 4

Education: B.S., Environmental Engineering, Rensselaer Polytechnic Institute, 1992; M.S. Course, Advanced Hydrology, Kansas State University, 2001; M.S. Course, Physical and Chemical Hydrogeology, University of Massachusetts, Lowell, 1996; M.S. Courses, Wastewater Treatment and Engineering; Open Channel Hydraulics, University of New Haven, Connecticut, 1994-95

Registrations and Certifications: Professional Engineer: VT 7350; Environmental Engineer: NH 9709; Professional Engineer: NY 79818 ; Certified Vermont Class 2 Public Water System Operator; 40-hour OSHA HAZWOPER Course; 8-hour OSHA HAZWOPER Course; Firefighter I Certification

Mr. Ashley has 27 years of environmental and civil engineering experience. The manager of the firm's Brandon office, his experience includes planning, management and design of water and sewer projects, hazardous waste and brownfield remediation, road and slope projects, stormwater collection and treatment, and site/civil development projects for municipal, state, local and private clients. Jon has supported environmental documentation and permitting for infrastructure and site projects and maintains strong working relationships with Vermont regulatory officials.

Municipal Project Manager, Basin Harbor Road Culvert Replacement, Bridport, VT. Municipal Project Manager for the replacement of a deteriorating corrugated metal pipe culvert that carries the West Branch of the Dead Creek and drains to Otter Creek. The culvert is to be replaced with a precast concrete box culvert. Responsibilities included managing the selection of the consultant and the design process through all phases. Assisted the Town and design engineer with strategies to streamline the project schedule to allow the culvert replacement to be constructed prior to upcoming planned utility pole relocations in this area. Responsibilities include supporting the Town through the selection of the contractor and construction of the replacement culvert. The project is being developed in accordance with the VTrans MAB process.

Salisbury Village Lighting and Sidewalk Study, ACRPC, Salisbury, VT. Project Manager in-responsible-charge of D&K's evaluation and planning services. Served as primary contact for Town. Evaluated existing conditions of safety and accessibility for pedestrians, presenting multiple alternatives for separated and attached walkways and lighting options for the village center.

Enosburg Salt and Sand Shed, Enosburg, VT. Project Manager for conceptual design and permitting to construct a new municipal salt and sand shed at the Town Highway Garage on VT Route 108. Developed structure alternatives to accommodate the 5,000 yards of sand and 225 tons of salt that the Town uses annually. Services included assessment of structure alternatives and assessment of natural resources features, including wetlands, floodways, and cultural resources for NEPA approval. This project is administered by VTrans through the MAB program.

Salt Shed, Proctor, VT. Project Manager for the study through bid phase engineering services for a new Town salt storage structure. The Town had predetermined preference for a pre-engineered building. Evaluated foundation alternatives. Coordinated with the Town to compare structure and vendor alternatives and select the preferred structure.

Multimodal Transit & Welcome Center, Montpelier, VT. Senior Environmental Engineer responsible for QA/QC review of the potential effects of proposed stormwater collection and infiltration practices on metals and PAH contamination on a brownfield site being redeveloped as a Multimodal Transit & Welcome Center. Provided engineering support during targeted excavation, treatment, and disposal of contaminated soils during the reconstruction of a retaining wall along the Winooski River and during site preparation for a bike path that will transect the site. Conducted three underground storage tank (UST) removal assessments during site preparation for the bike path.

US Route 7 Segment 6 Construction Inspection, Brandon, VT. Senior Environmental Engineer for a supplementary site investigation to precharacterize petroleum contamination associated with three known and two former hazardous waste sites in the vicinity of a \$20M roadway and underground infrastructure reconstruction project through the heart of downtown Brandon. The road reconstruction project is largely being funded through a federal and administered through the VTrans Municipal Assistance Bureau (MAB).

US Route 2 Pedestrian Improvements, East Montpelier, VT. Senior Environmental Engineer for a supplementary site investigation to precharacterize petroleum contamination associated with a hazardous waste site in the area of a 2,000 foot long pedestrian enhancements project administered through the VTrans MAB.

Jenny Austin, PE

Years of Experience: 19

Education: B.S., Civil Engineering, University of Vermont, 1999

Years with D&K: 7

Registrations: Professional Engineer: VT 8551

Ms. Austin has 19 years of experience providing management and design for civil engineering projects. Her experience focuses on traffic engineering to support future growth for public and private entities, as well as transportation planning and design for municipal, regional, and state projects. Jenny has worked on a range of projects, including serving as Assistant Municipal Project Manager overseeing a 1.2-mile roadway reconstruction project and project engineer for a pilot project to support the monitoring and performance evaluation of a road diet. She provides transportation master planning and has provided peer reviews of traffic impact studies. Jenny has experience with all phases of transportation design from scoping through contract plans and bid documents. Jenny was the recipient of the Vermont Young Engineer of the Year for 2009.

Beaver Pond Shared Use Path Project, MPM Services, Proctor, VT. Municipal Project Manager (MPM) to assist the Town with the design phase of the shared use path project. Responsibilities include preparation of a design engineering services RFP, served on the selection committee meeting, coordinated meetings with the Path Committee including engaging Doodle Polls for collecting input from meeting attendees and attended meetings; review of design engineers' invoices; and has been a project liaison between VTrans and the design engineer.

Planning Study for the Intersection of States Prison Hollow Road and Monkton Ridge Road, Monkton, VT. Project Manager for a planning study and conceptual plan development for improvements to the States Prison Hollow Road and Monkton Ridge Road intersection. This is an ACRPC project which follows the VTrans MAB process. Project responsibilities include attending committee meetings, reviewing and evaluating the intersection, preparation of conceptual plans, and general project management tasks. The project goal will be to have a conceptual design for this intersection, which includes straightening the States Prison Hollow Road approach of the intersection, associated grading needed to tie into existing conditions, and the adjacent side street, and other incidentals for the project.

East Darling Hill Road Bicycle and Pedestrian Scoping Study, Town of Burke, VT. Project Engineer for a scoping study to develop alternatives to make East Darling Hill Road more bicycle and pedestrian-friendly. The study developed and evaluated various alternatives including variations of bike lanes and sharrows markings and two different multi-use path options. Responsibilities included review of development and evaluation of alternatives, evaluation matrix preparation, attending and presenting at local meetings, and preparation of the Scoping Study report.

Highgate Rte 78 Bicycle and Pedestrian Scoping Study, Town of Highgate, VT. Project engineer for a scoping study to evaluate bicycle and pedestrian improvement alternatives along Route 78 in the village of Highgate. This project was funded by VTrans and followed the MAB process. The study developed and evaluated sidewalk and bike lane alternatives beginning at the intersection with VT 207 and continuing east approximately 0.4 miles. Responsibilities included review of development and evaluation of alternatives, evaluation matrix preparation, attending and presenting at local meetings, and preparation of the Scoping Study report.

Barre-Montpelier Road Diet, VTrans, Berlin, VT. Project Engineer on a pilot project for VTrans to support the monitoring and performance evaluation of the Barre-Montpelier Road Diet project. Responsible for public outreach process and reviewing summarizing hundreds of survey responses, development of a Road Diet Evaluation Matrix with scoring criteria, preparation of a Road Diet Assessment Report, traffic analyses, before and after evaluations, and project management coordination with VTrans. This project was featured in FHWA's Innovator newsletter.

Brandon Route 7 Segment 6 Reconstruction Project Local Project Management Services, Brandon, VT. Assistant with all aspects of the Local Project Manager role overseeing a 1.2-mile roadway reconstruction project. Responsibilities included being a liaison between the design engineer, municipality, and VTrans; attended and prepared notes at public meetings; review of plans; assist the Town through the right of way phase, including assistance with waiver valuation forms; compiling, reviewing, and submitting invoices to VTrans from the engineering consultant and subconsultants for project design; and performed other general project management LPM tasks including project coordination, scheduling meetings, providing design-related information to new Town staff, and other necessary tasks.



David Conger, PE

Years of Experience: 26

Education: B.S., Civil Engineering, University of Vermont, 1992

Years with D&K: 8

Registration: Professional Engineer: VT 7689

Mr. Conger has 26 years of experience in transportation and civil engineering for municipal, state, and federal clients. David has served as Project Manager on numerous intersection and corridor scoping studies, as well as major transportation studies related to environmental impact statement evaluations. David is thoroughly familiar with transportation planning and the need for comprehensive public involvement to accomplish these evaluations.

Construction Phase Services, US Route 7 Segment 6, Brandon, VT. Manager of Construction Phase Services for full-time construction administration and observation for a major roadway improvement project in the heart of downtown Brandon. The project includes reconstruction of more than a mile-long section of US 7 roadway, all associated intersections and two parks. D&K is providing four full-time construction inspectors to support the improvements. The project was developed through the VTrans MAB.

Great Streets BTV, Burlington, VT. Senior Project Engineer for the design implementation of reenvisioned downtown Burlington into a vibrant, walkable, and sustainable urban center. Assisted with vetting team design standards established for the downtown core. Led development of design documents for the reconstruction of downtown streets and City Hall Park.

VT Route 2A Sidewalk, Williston, VT. Project Manager for the LTF-administered transportation study to identify options, issues, and costs to develop a sidewalk connection for pedestrians along VT Route 2A. Sidewalk alignment incorporates modification to an existing street crossing and connection to existing sidewalks at the terminus. The study evaluated potential impacts to stormwater detention pond, Class III wetlands, and use of existing Town easement for the sidewalk alignment. Contract documents, right of way plans, and constructions support will be provided upon approval of alternative by Selectboard and VTrans Project Manager.

Neshobe River Overflow Culvert, Brandon, VT. Project Manager for design of an overflow culvert to mitigate flooding of US Route 7 in downtown Brandon under a Hazard Grant Mitigation Program (HGMP) grant. Significant storm events cause overtopping of the roadway by the Neshobe River. A preliminary feasibility study was advanced with updated hydraulics and inlet control details to provide a three sided precast structure which prevents flooding at the 100-year design event. The design integrated the hydraulic requirements with a tight urban site to develop a geometry and construction details protecting adjacent structures and utilities while limiting ledge removal and property acquisition. The project was fast-tracked with permitting, design, and several grant modifications to

initiate construction in advance of proposed highway work in the Town. Construction management services were continued for submittal and field condition reviews as well as near full time construction inspection services. Team developed processes to keep client and public apprised of the project status through daily logs, materials measurement, pay requisition review and bi-weekly contractor meetings.

Maple and Union Street Sidewalks, VTrans, Brandon, VT. Project Manager for design of new sidewalks along Maple and Union Streets in the Town of Brandon. This municipally managed project was developed through the VTrans LTF Section. The new sidewalks extend a length of approximately 2,500 ft and include a new pedestrian bridge over the Neshobe River, as well as an at-grade crossing of the Vermont Railway. Design services include conceptual layout and alignment of sidewalks, development of preliminary plans, utility coordination, development of right-of-way plans, attendance at local concerns and alternatives presentation meetings, bridge alternatives report, preparation of CE documentation, permitting, and final design plans.

Knight Lane Sidewalk, Williston, VT. Project Manager for the design and construction phase services for 242 linear feet of sidewalk in a highly commercial area. The new 5-ft-wide concrete sidewalk is being designed to match the existing connecting sidewalk while considering the existing roadside drainage swale and bordering stormwater detention basin. The design accommodates steep side slopes on either side of the walkway. This project includes survey, right of way, conceptual through final plans, bidding assistance, environmental resource impacts, and cultural resource review. This ongoing municipally managed project is being developed through the VTrans MAB.



Brian Breslend, PE

Years of Experience: 12

Years with D&K: 12

Education: B.S., Civil Engineering, University of Vermont, 2007

Registrations: Civil Engineer: VT, NH, ME

Mr. Breslend is a Civil Engineer with 9 years of experience providing engineering services for transportation projects. His experience includes the preparation of alternatives analyses; preliminary and final designs; cost estimation; plan development; field survey; and utility coordination for a variety of pathway, sidewalk, and roadway projects.

US Route 2 Scoping Study and Pedestrian Improvements Design, East Montpelier, VT. Project Manager for design of pedestrian enhancements as recommended in the Town's Scoping Study, also prepared by D&K. Project includes the design of sidewalk and crosswalk improvements, consolidation of driveway openings, property owner coordination to understand and mitigate concerns, and extensive VTrans coordination due to location along a state highway. The project is largely being funded through a TA Grant and administered through the VTrans Municipal Assistance Bureau (MAB), and is being developed in accordance with the 2014 VTrans Municipal Assistance Bureau Local Projects Guidebook.

Bethel Mountain Road Slope Stabilization, Rochester, VT. Project Manager for evaluation, survey, permitting and final design for a 2,800-LF emergency roadway repair project. The project implements long-term repairs to sections of the embankment that failed during a heavy spring rainfall and snowmelt event that closed the road, including upgraded drainage systems and structures, slope repair, and roadway reconstruction and minor realignment. Serving as a valuable mountain connector road between VT 100 and VT 12, rapid reopening and stabilization of the roadway was a critical need, which dictated a significantly compressed schedule. The project was managed by the Town of Rochester and received FHWA-ER funding. Responsible to lead day-to-day development of D&K's services, provide senior level engineering, and coordinate with the client and state and federal regulators.

Delaware & Hudson Rail Trail, Railroad Bridges Rehabilitation, VTrans, West Pawlet and Rupert, VT. Transportation Engineer for the design of repairs to five (5) rail structures on the Delaware and Hudson Rail Trail line. A number of structures on this line suffered scour-related damage due to Tropical Storm Irene and were in need of repair. D&K conducted a field reconnaissance and topographic survey of each site; developed a range of alternatives to repair each bridge, preliminary and final design drawings and specifications, and CE documentation and permit applications; and prepared quantity and cost estimates. Brian developed plans and prepared quantity and cost estimates for the project.

Warners Corner Sidewalk Project, Colchester, VT. Project Engineer for design and construction phase services for 4,725 lf of new sidewalks along portions of the four roadways intersecting at Warners Corner. Scope included survey, right-of-way documentation, conceptual plans, utility relocations, preliminary and final plans, landscaping, cost estimates, and permitting. The project was a municipally managed project developed through the VTrans LTF Section. Responsibilities included preparation of final plans, review and drafting of the storm drain network (catch basins, culverts, and pipes), right-of-way plan preparation, and preparation of quantity and cost estimates.

Brush Hill Road Signing and Pavement Marking Design, Williamstown, VT. Design Engineer for evaluation and design for signing and pavement markings on Brush Hill Road in the vicinity of the Williamstown School. An assessment of the existing school signs and pavement markings was necessary, as well as coordination with the local officials.

Maple Street Reconstruction, Weathersfield PLH MAPL(1), Weathersfield, VT. Transportation Engineer for design, permitting, and bid phase services for the Maple Street roadway reconstruction. Project includes assessing existing pavement condition and making recommendations regarding reconstruction or reclamation, investigating options to improve sight distance at the intersection of Maple Street and VT Route 106, improving the roadway alignment at a knoll/curve in the road, and drainage improvements. Signage and striping along the project corridor will be updated to meet current State and Federal requirements. Project is funded with a Public Lands Highway Discretionary Program Funds grant, administered through VTrans' Local Transportation Facilities (LTF) Section, and follows the LTF project development process, as set forth in the VTrans LTF Guidebook for Municipally Managed Projects.



Chris Schmelzenbach, PE

Years of Experience: 25

Years with D&K: 4

Education: B.S., Civil Engineering, University of Vermont, 1991
A.S., Building Construction Technology, Wentworth Institute of Technology, 1987

Registrations: Civil Engineer VT: 7564, ANR Vermont State License

Mr. Schmelzenbach is a Civil Engineer, Resident Engineer, and Manager of the Construction Department at D&K. Chris has 25 years of experience in transportation civil/site projects, and his background includes 6 years working for VTrans as Project and Resident Engineer on a variety of roadway and bridge projects. He has provided preliminary and final designs, cost estimation, plan development, field survey, utility coordination, and resident engineering for a variety of sidewalk, pathway, roadway, and bridge projects. Chris is thoroughly knowledgeable of projects administered through the VTrans Municipal Assistance Bureau (MAB), including all phases of project development from project conception through construction.

US Route 7 Segment 6 Construction Inspection, Brandon, VT. Construction Department Manager/Resident Project Representative for full-time construction inspection services for a major roadway and underground infrastructure reconstruction project through the heart of downtown Brandon. The project consists of roadway widening, sidewalks and curbs, pavement markings, traffic signs, signal, water main, sanitary sewer, aerial & underground utilities and stormwater improvements for the Brandon Village portion of U.S. Route 7. Included are portions of Franklin Street, Park Street, Center Street, Conant Square, Grove Street, and associated intersections and side roads. The project reconstructs a major north-south highway link through downtown to create a geometric configuration that will serve the high traffic volumes and access of abutting properties.

Municipal Project Manager, Enhancement Project STP BIKE(30)S, (LTF), Woodstock, VT. Municipal Project Management for the town of Woodstock's VAOT Enhancement Project STP BIKE(30)S, a \$210K project. Project included all MPM activities such as payment request review and recommendation, development of RFPs, review of Rights of Way, assure permitting compliance, conduction of public hearings, and review of project plans.

Construction Observation Services, VTrans, Statewide, VT. Construction Department Manager for ongoing on-call contract with VTrans to provide consultant construction observation services. Serves as a point of contact for the District Engineers for assignments under this on-call contract.

Construction Observation, Waterbury Roundabout, Waterbury, VT. Chief Resident Project Representative for a new vehicular roundabout at the intersection of US Route 2 and VT Route 100. This \$3.9M project included: modification and rehabilitation to existing bridges for roadway and pedestrian accommodation; partial and complete roadway reconstruction; imprinted island construction; stormwater management;

parking reconfigurations and improvements; new sidewalks, curbing, crosswalks, and signage; undergrounding of utilities (electrical and communications); replacement and extension of water and sewer mains; and lighting, landscaping, and streetscaping. Monitored construction and traffic control and coordinated regularly with state agencies, municipality, contractor, and design engineer.

Marketplace and College Street Garage Repairs, Burlington, VT. Manager of Construction Phase Services for construction observation and oversight of testing services for the rehabilitation of a 4-level 460-slip garage and a 5-level 400-slip garage. Providing oversight of construction observation, coordination with the municipality, design engineer, contractors, and subcontractors. The project serves two parking garages and consists of structural rehabilitation, brick repair, drain system replacement, elevator replacement, new HVAC devices, roof membrane replacement, electrical and life safety upgrades, and wayfinding improvements.

Engineer 'C', Structures Division, VTrans. The oversight of approximately 30 bridge and roadway projects in varying stages of completeness ranging from preliminary engineering, ROW, to review of fabrication drawings. Design of roadways, bridges, and culverts and associated components. Supervision and training of engineers and technicians along with prioritization and delegation of workloads. Attendance at resource, pre-construction, and final inspection meetings.